



## INSIDE THIS ISSUE

PG. 2

President's Message

Events

PG.3

RP Events

Winter Conference

RP Campaign Updates

PG. 4

Nomination Committee 21'

Student Activities Update



## STUDENT ACTIVITIES

# Investing in the Next Generation

*Student Activities*  
*Theme of the Month See Page 4:*  
*Student Activities Update*

## FEBRUARY MEETING

2.3.2021

TECH SESSION SPEAKER: Jim Monk

TOPIC: AR ASHRAE History Session II

PROGRAM SPEAKER: Jeff Scanes, Johnson Controls

TOPIC: Airflow Control for Critical Applications

REGISTER  
NOW

## President's Message

February 2021 Edition

by: Drew Grant

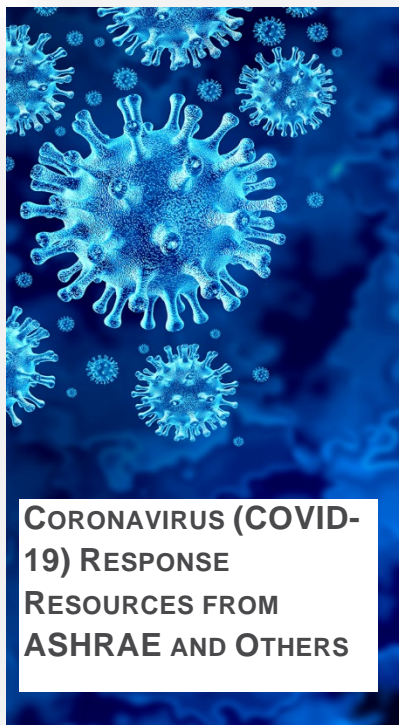


Greetings, chapter members! I hope your New Year as started off successful for you and your families.

February has come flying in with opportunity for you to engage in our Chapter through community events (CONNECT), plugging in and gaining knowledge through our Chapter Programs (GROW), and participation in fundraising for our Chapter thru our Research Promotion Events. These events will create prime opportunity to engaging in SERVING in our Chapter. (SERVE) The goals defined in parenthesis were the goals we started the 2020-2021 ASHRAE Calendar year with and we are keeping

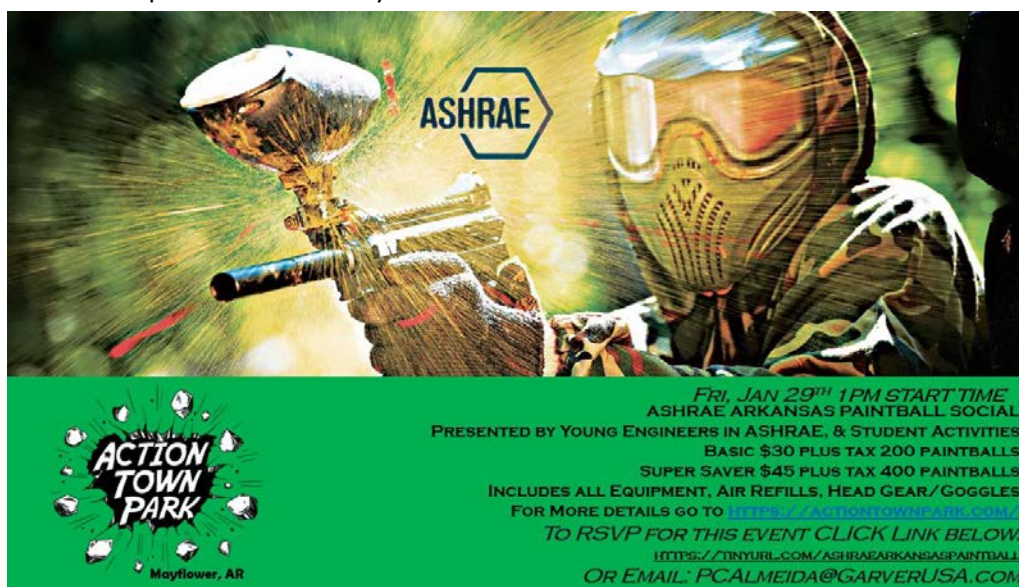
<b>AR Chapter Officers</b>
Drew Grant, President
Cruz Eslick, CTTC/PE
Jake Skinner, Treasurer
Alex Halloran, Secretary
Forrest Moseley, BOG
Terry Jacks, BOG
Melanie Richardson, BOG
<b>AR Chapter Chairs</b>
Steve McConnell, RP
Cody Yeoman, MP
TJ Bell - Refrigeration
Russell Black, Historian
Josh Robinson, Social
Priscilla Almeida, YEA
Daniel Nehus, Student Activities
Ron McCarty - Honor & Awards
Chris Ahne - Gov. Affaris
Clayton Kinley, Sustainability
Brody Barker, Newsletter
Andrew Naeyaert - Webmaster
Ryan Smith - Social media
Stephen Eoff - Reception
Hunter Brock, ECC

**CLICK HERE**



them despite all the curve balls we have been thrown as an organization over the past year. If you have not had a chance to connect or serve at any of our events, I encourage to do so!

ASHRAE Members will be meeting up Jan 29<sup>th</sup> at Paintball Arkansas enjoying an opportunity for a community outing. Please come and enjoy this fun filled afternoon of fellowship. RSVP as soon as you can.



Our Program Speaker for the Month of February is Jeff Scanes with Johnson Controls. He will be talking to us about Airflow Applications for Critical Environments. Look for the registration link from Cruz to get ready for this virtual Chapter Program through Zoom Meetings.

Jeff is Business Development Manager, Critical Environment Controls at Johnson Controls. Educated in England, Jeff holds a Bachelor of Science degree in Electronic Engineering and has more than 20 years of Laboratory and Healthcare critical environment sales engineering experience.



Also, this month, we will enjoy a continuation of History Tech session by Jim Monk. Jim has been an exceptional leader in our industry and in The Arkansas Chapter of ASHRAE and we are grateful that he will be giving an inside look into our Chapter's History.

The 2021 AHR Expo originally scheduled to be held Jan 25-27 in Chicago has been cancelled. The 2021 ASHRAE Winter Virtual Conference will take place on an online format Feb 9-11, and will include a mixture of live, pre-recorded and on-demand sessions. Check out [ASHRAE WINTER CONFERENCE](#) for more details and get registered today!  
[WWW.ASRHAE.ORG](http://WWW.ASRHAE.ORG)



**ASHRAE VIRTUAL**  
**WINTER CONFERENCE**

▶▶▶ February 9-11, 2021





**Steve McConnell**  
RP Chair

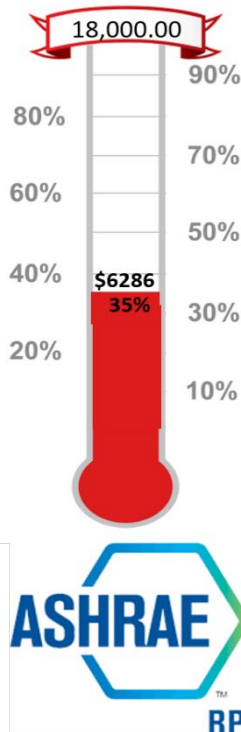
Thank you for your support of the AR ASHRAE Chapter by helping us reach our 18K goal this calendar year.

For more information on how to partner with us, email me: [smcconnell@lemvrw.com](mailto:smcconnell@lemvrw.com).



**DONATE TO ASHRAE RESEARCH TODAY**  
2020 - 2021 GOAL: \$18,000.00

[\*\*DONATE HERE!!!\*\*](#)



We have several events coming up soon to raise funds for our great AR Chapter. Research Promotion Chair, Steve McConnell has been creative in his efforts to raise money for our chapter during his campaign year. Our upcoming Fundraiser will be held with Taco's 4 Life.

In our efforts to get the participation out of our members during this fundraiser opportunity, we thought it would be great to work regionally. Taco's 4 Life is partnering with us in (4) locations across Central Arkansas. You can find those locations at the bottom of the flyer. You will have the opportunity for lunch or dinner between the hours of 11am-9pm for dine in or carry out. Also, if you are a business owner, and would like to cater an event or to your employees, this counts as part of the fundraiser. All we must do is let them know you are part of the Arkansas Chapter of ASHRAE. We appreciate your help to raise funds for our chapter and look forward to this fundraising event.



Our next event coming up this year is the Trap Shoot. This event has grown every year that we have offered it. Ron McCarty, part of the Social Committee has done a great job putting this event together for us. Whether you are a seasoned veteran, just needing some target practice or a first timer, come join at this great event! Check out the Chapter webpage to get your team registered today or click the image below!

## ARKANSAS ASHRAE RP CAMPAIGN TRAP SHOOT



### TOURNAMENT

March 12, 2021

12pm-3pm



Ammo and Awards  
Sponsored By:



Lunch provided by



[Click Here for More Details!!!!](#)



The Arkansas Game and Fish Foundation  
Shooting Sports Complex  
2800 Graham Road  
Jacksonville, AR 72076  
(501) 241-2441

**RESEARCH PROMOTION**



- Kim Koch, Chair
- Randy Moore, Member
- Steve McConnell, Member
- Ron McCarty, Member
- Bill Simpson, Member

Our Chapter Officer team and you as a member has elected a nomination committee team to help land out next Officer to lead our Great Chapter. Over the next month, this team led by Kim Koch, Insight Engineering, pictured to your right, will be working together interviewing candidates and finding that exact person.

Thank you to this team and for volunteering your time this year to serve on the 2021' Nomination committee.



*Click the Picture to learn more of how you as a Student can get plugged into our community!*

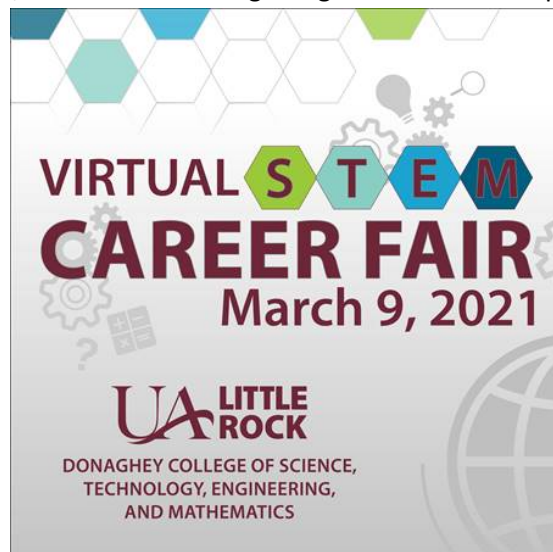


The late Ray Arledge memorial fund has been established and is in hopes of finding a couple of candidates through engineering programs from ATU, ASU, & UALR to receive a substantial scholarship. We are grateful for this opportunity and thankful to the Arledge family to invest in the next leaders of our industry. The winning student(s) could receive as much as \$8,000.00 in scholarship money.

Our Student Activities Chair lead by Daniel Nehus, Harrison Energy Partners, has been working to get the scholarship application distributed out to the local Universities to students that are interested in the opportunity. The Arledge family will be reviewing scholarships to present to the best fit candidate!

The University Arkansas Little Rock is hosting a Virtual Stem Fair Event on March 9<sup>th</sup>. The Arkansas Chapter will be participating in this event by engaging with current and future Engineering students about the benefits of being part of our great Arkansas Chapter ASHRAE.

Our Student Activities Chair lead by Daniel Nehus, Harrison Energy Partners, has been working to get the scholarship



#### 2020-2021 CHAPTER MEETING CALENDAR

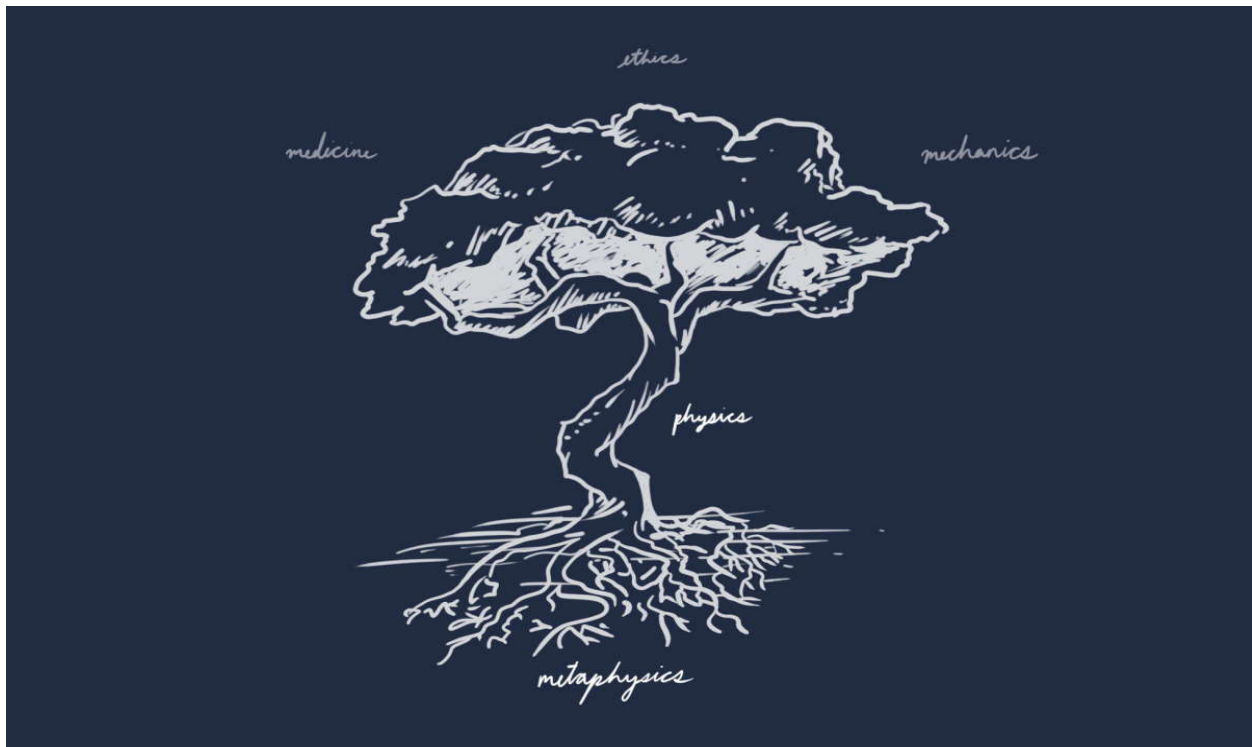
Month	Meeting Date	Technical Session (Speaker/Topic)	Meeting Topic	Presenter
September Meeting	9/2/2020		Presidential Address	Chuck Gullledge (Society President)
October Meeting	10/7/2020		Optimizing Chiller Efficiencies	Brett Monteleone (Johnson Controls)
November Meeting	11/11/2020	Clayton Kinley - The Importance of Proper Control Valve Selection	Bi-polar Ionization	Michael S. Sherber, PE
December Meeting	12/2/2020	Sam Cummings - "Arkansas ASHRAE History - Founding of Our Chapter"	Condenser Water System Optimization and Operation	Justin Wieman
January Meeting	1/6/2021	Cat Vogt - Know Your Way Around a Psychrometric Chart	Acoustics and Noise Control	Mark Fly
February Meeting	2/3/2021	Jim Monk - Arkansas ASHRAE History - 90's & 2000's	Airflow Control for Critical Environments	Triatek
March Meeting	3/11/2021	Chris Galloway, PE - Metering for HVAC Applications	Productivity From Anywhere	Pam Duffy
April Meeting	4/1/2021	Clayton Kinley - Advantages of Integrating VRF / BAS	VRF Panel	Multiple Representatives
May Meeting	5/6/2021		Past Presidents' Night	TBD



# The Historical Evolution of Arkansas ASHRAE

By Russell Black, Historian

As I researched Arkansas ASHRAE history late last year to develop the History tech sessions for December 2020 & February 2021, I was struck by the evolution of Arkansas ASHRAE through the years. I was metaphorically reminded of the Tree of Philosophy expounded in René Descartes' famous *Principles of Philosophy* where from a foundational base, knowledge grows and branches. Arkansas ASHRAE from its foundational roots has grown naturally and organically and branched into many directions to serve the needs of its members.



René Descartes' Tree of Philosophy

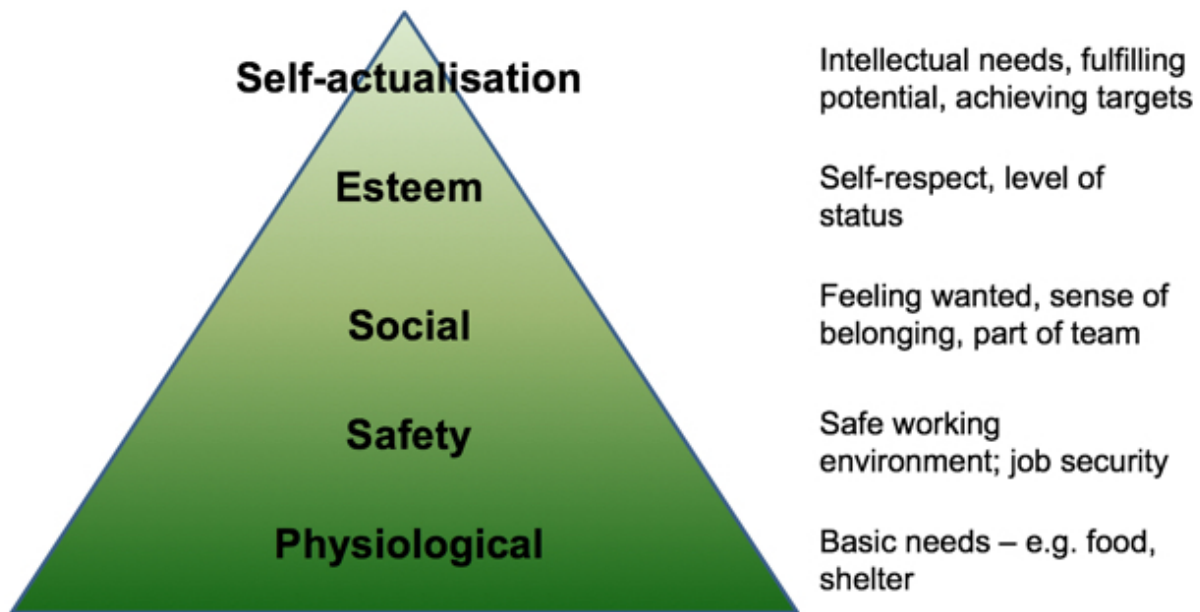
As Sam Cummings noted in his December Tech Session on the early history of Arkansas ASHRAE, the organization started out as a strictly professional, research, and technical organization, where suits and ties were the style. However, in the early 1990's, Arkansas ASHRAE started, while still retaining its professional and technical foundation, to expand into more social and outreach modes, starting with the Oktoberfest gatherings and the collegiate chapter movement. This flourishing of sociality in the 90's set the growth pattern to what Arkansas ASHRAE is today. Using Research Promotion as the *modus operandi* template for social events, we now have and have had through the years multitudinous social events: golf tournaments, bowling competitions, skeet shooting, poker tournaments, vendor fairs, cookouts, etc. & etc. ....

Regarding the outreach movement started in the 90's, Arkansas ASHRAE has established several college chapters through the years at the University of Arkansas, UALR, ASU, and ATU. In the 2000's now,

Student Activities has also become involved in outreach to K-12, and we have perennially had judges participate at local science fairs.

This evolution of Arkansas ASHRAE, besides the tree metaphor, also reminds me of the higher needs fulfillment promulgated in Maslow's famous Hierarchy of needs, specifically regarding the social, esteem, and self-actualization dimensions of individual human personality.

## Maslow's Hierarchy of Needs

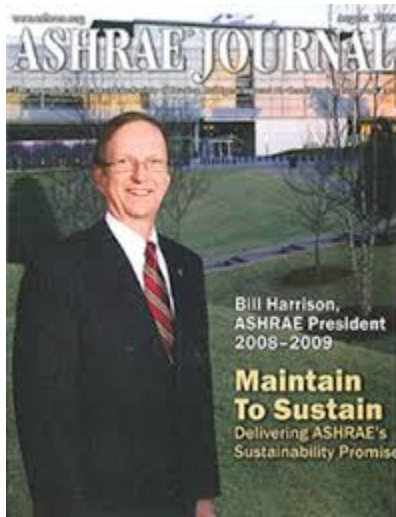


tutor2u

Arkansas ASHRAE, and all ASHRAE for that matter, has grown continuously to establish programs to enrich the individuals in the membership, creating avenues for social growth and networking along with individual professional and leadership growth. Arkansas ASHRAE has now developed diverse nurturing paths for its younger memberships through college scholarships, the YEA movement, and the collegiate chapters. Young members can join the Arkansas ASHRAE BOG team to experience the camaraderie of the teamwork necessary to run the organization, with great opportunities to attend ASHRAE-sponsored leadership skills training programs. All this helps a young person to develop the social networking, leadership skills, and professional growth that turns their potential into the self-respect, confidence, and experience necessary for professional success.

And the ASHRAE Journal itself can be a significant source of intellectual stimulation for all members, young and older. I recommend reading each incoming President's mission statement. They are rich veins of technical and intellectual gold. For example, our own Bill Harrison's Presidential address,

*Maintain to Sustain*, was a seminal exposition on the effective integration of the design and operations phases of building technology. ASHRAE is rich with this type of high-level professional literature.



We should all be proud of our Arkansas ASHRAE chapter (and for ASHRAE in general) that its evolution has organically grown to embrace and nurture the expanded human potential of all its members.